



868 MURRAY ROAD, DOTHAN, AL 36303

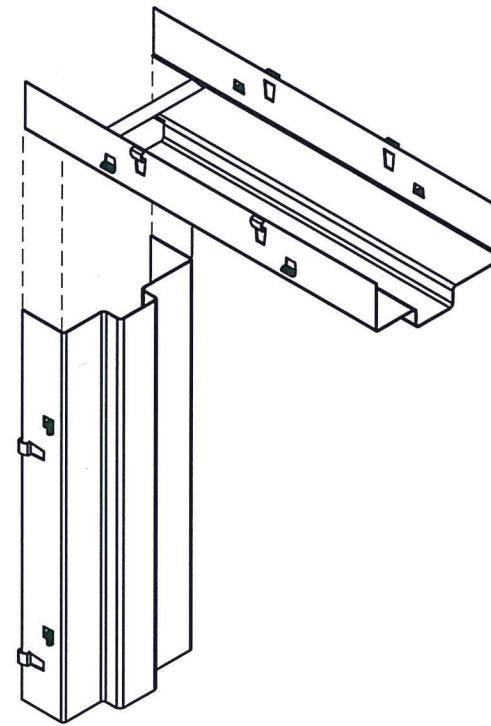
"REDIFRAME" ONE-PIECE STEEL FRAME SYSTEM UTILIZING A JELD-WEN OPAQUE STEEL DOOR PANEL "IMPACT"

GENERAL NOTES

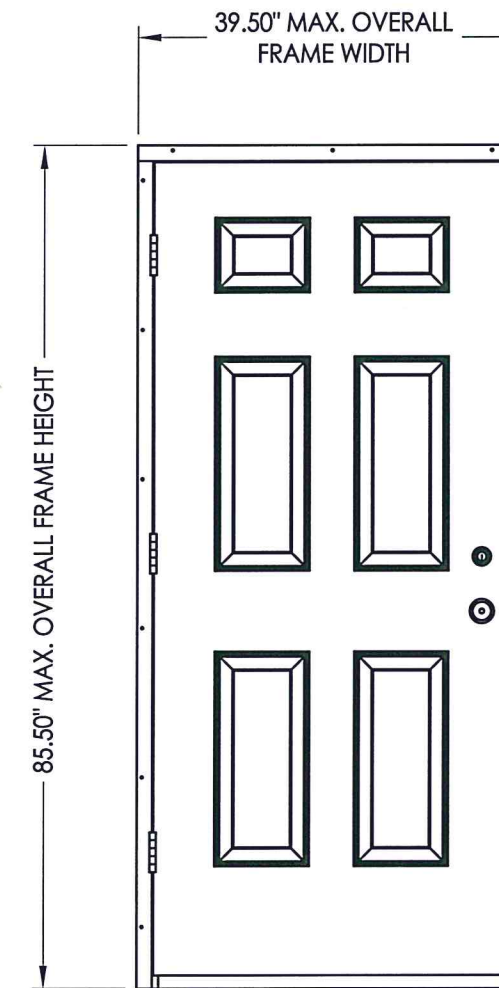
- This product has been evaluated and is in compliance with the 7th Edition (2020) Florida Building Code (FBC) structural requirements including the "High Velocity Hurricane Zone" (HVHZ).
- Product anchors shall be as listed and spaced as shown on details. Anchor embedment to base material shall be beyond wall dressing or stucco.
- When used in the "HVHZ" this product complies with Section 1626 of the FBC and does not require an impact resistant covering.
- When used in areas outside of the "HVHZ" requiring wind borne debris protection this product complies with FBC Sections 1609.1.2 & R301.2.1.2 and does not require an impact resistant covering. This product meets missile level "D" and includes Wind Zone 4 as defined in ASTM E 1996 and FBC Sections 1609.1.2.2 & R301.2.1.2.1.
- Site conditions that deviate from the details of this drawing require further engineering analysis by a licensed engineer or registered architect.
- Outswing configurations using high water dam threshold item #70 meet water infiltration requirements for "HVHZ".
Inswing configurations and outswing configurations using sill item #71 and #72 do not meet the water infiltration requirements for the "HVHZ" and shall be installed only in non-habitable areas or at habitable locations protected by an overhang or canopy such that the angle between the edge of canopy or overhang to sill is less than 45 degrees.
- When used in the "HVHZ", steel shall be protected as specified in FBC Section 2222.6.

TABLE OF CONTENTS

SHEET #	DESCRIPTION
1	Typical elevations, design pressures & general notes
2	Steel frame cross sections & details
3	Door panel details
4	Horizontal cross sections
5	Vertical cross sections
6	Buck and frame anchoring - 2X buck
7	Buck and frame anchoring - steel stud
8	Bill of materials and components

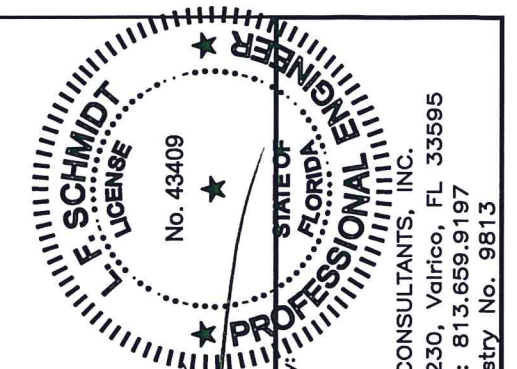


REDIFRAME ONE-PIECE



INSWING OR OUTSWING

OVERALL FRAME DIMENSION	DESIGN PRESSURE (PSF)	
	POSITIVE	NEGATIVE
39.50" X 85.50"	+ 66.0	- 66.0

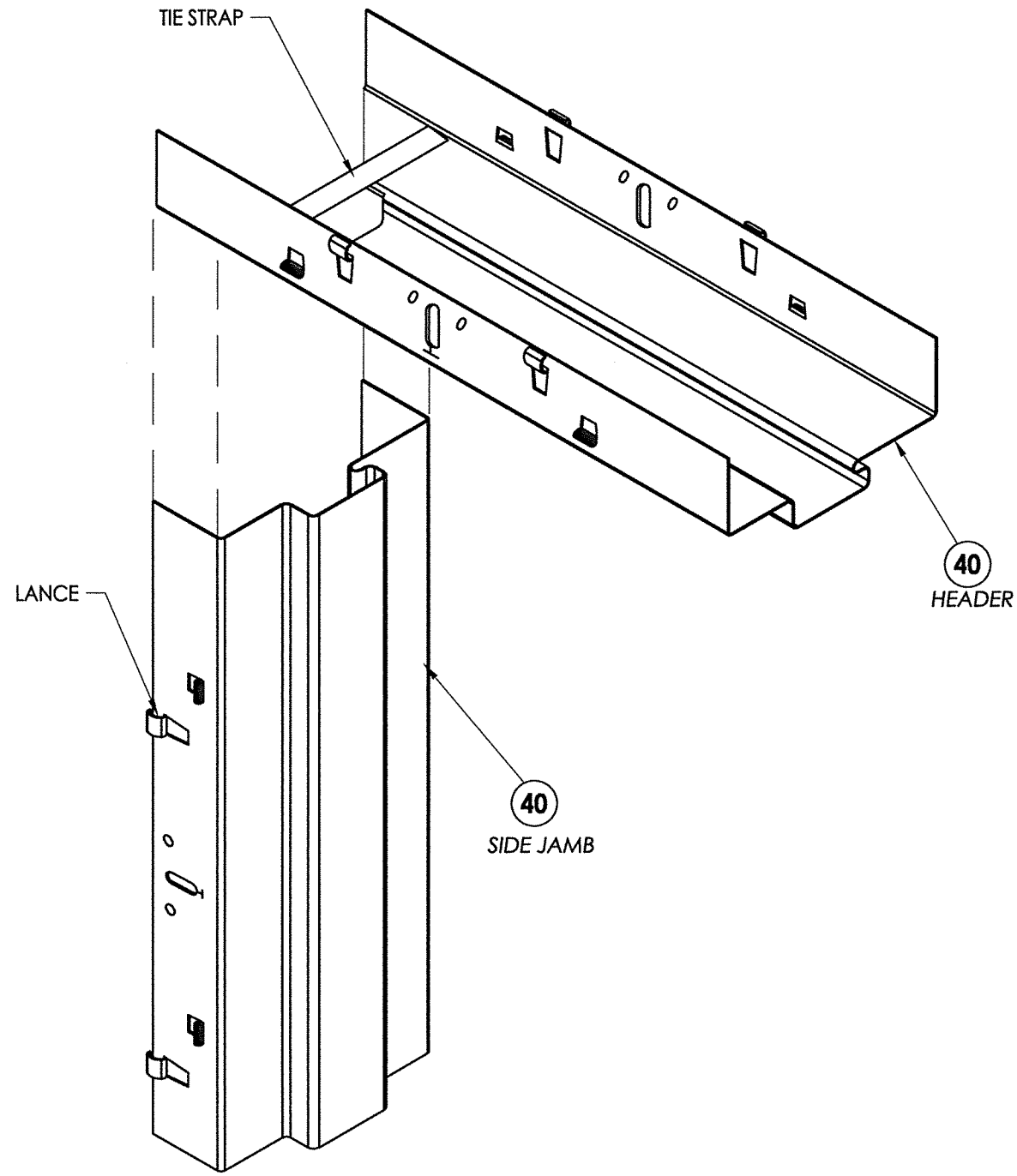


August 12, 2020

Documents Prepared By:
Lyndon F. Schmidt
P.E. No. 43409

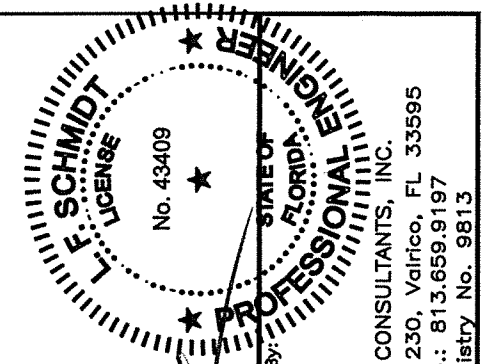
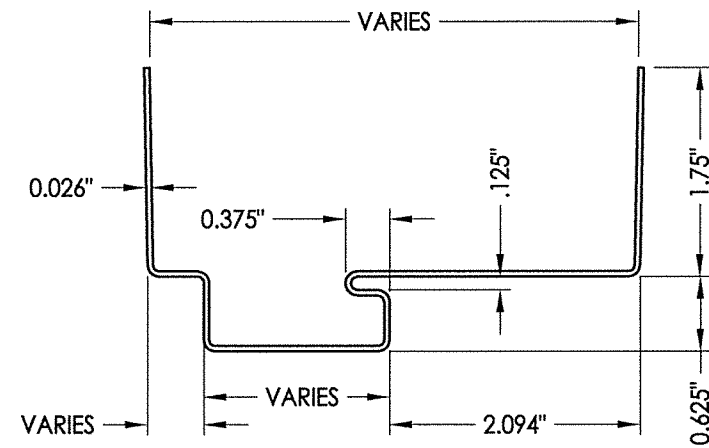
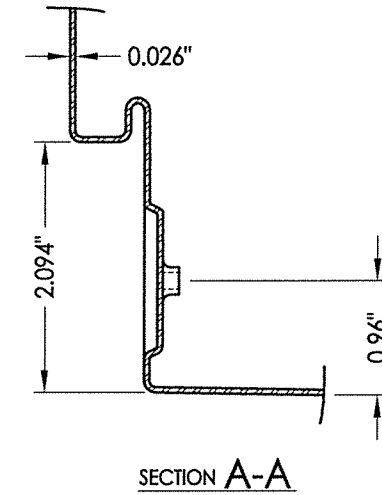
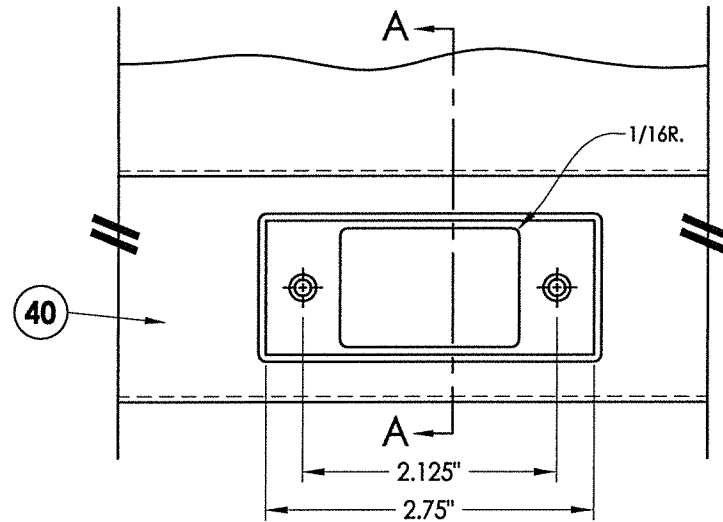
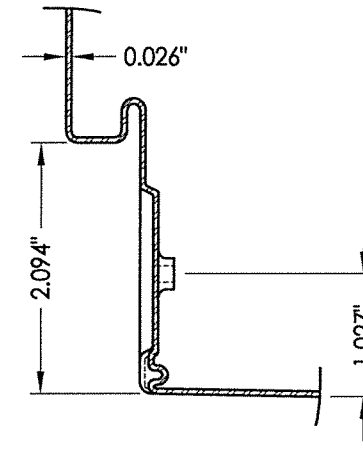
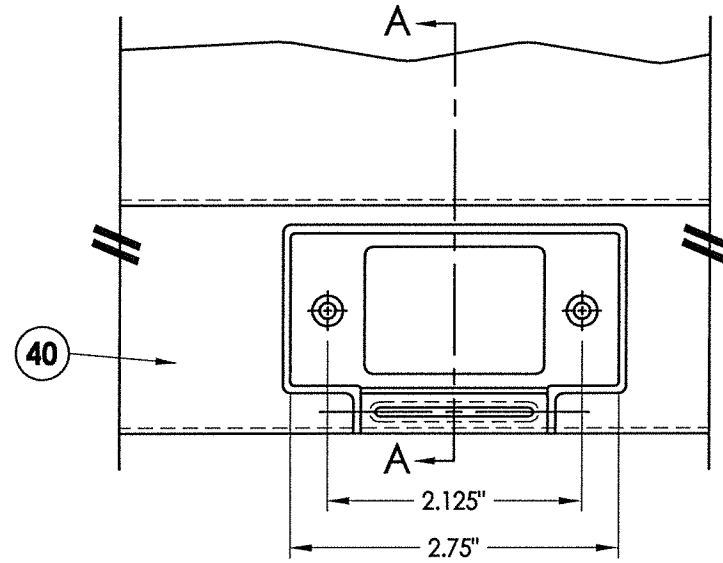
PROFESSIONAL ENGINEER
FLORIDA
BUILDING CONSULTANTS, INC.
P.O. Box 230, Valrico, FL 33595
Phone No.: 813.659.9197
FBPE Registry No. 9813

PRODUCT: DUNBARTON REDIFRAME ONE-PIECE STEEL FRAME	
PART OR ASSEMBLY: TYPICAL ELEVATIONS, DESIGN PRESSURES & GENERAL NOTES	
NO.	DATE
3	8/12/20
2	9/29/17
1	3/24/15
DATE	3/14/12
SCALE:	N.T.S.
DWG. BY:	JK
CHK. BY:	LFS
DRAWING NO.:	FL-15366.3
SHEET	1 OF 8



NOTES:

1. HEADER AND SIDE JAMB MINIMUM 22 GA. STEEL.
2. FRAME SHOWN WITHOUT OPTIONAL STEEL TRIM CASING.
3. NON-KERF FRAMES DO NOT MEET AIR AND WATER CRITERIA.

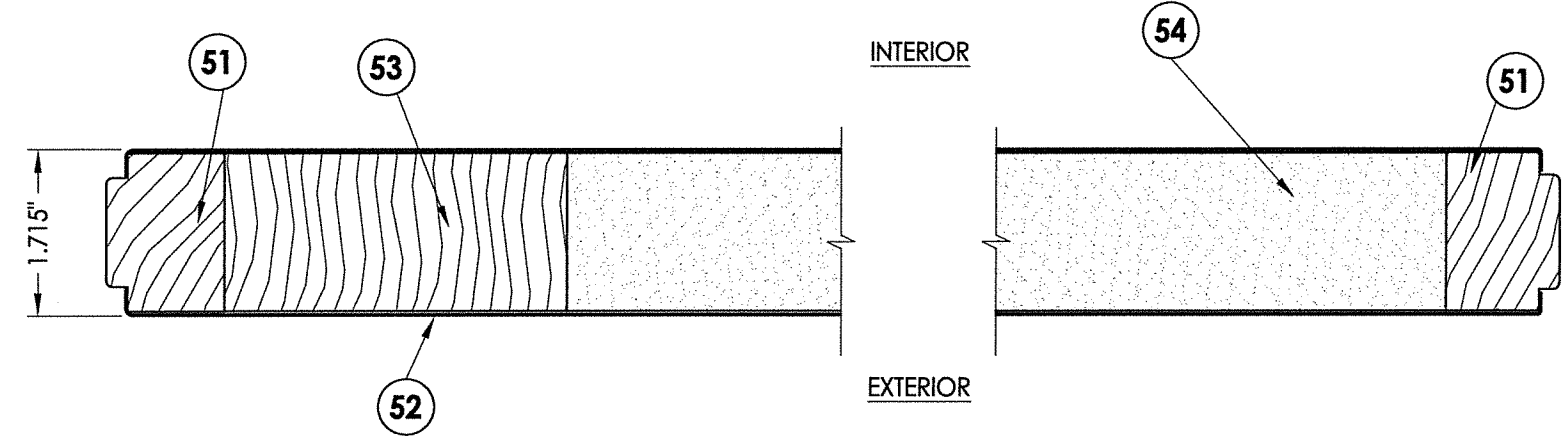
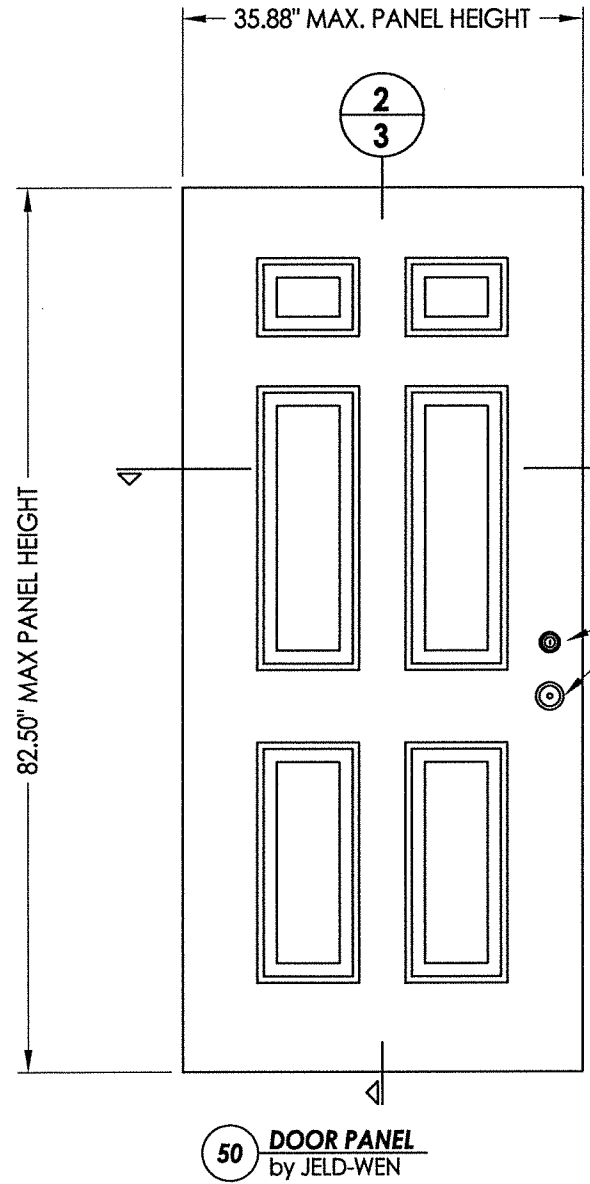


August 12, 2020
 Documents Prepared By:
 Lyndon F. Schmidt
 P.E. No. 43409
 R.W. BUILDING CONSULTANTS, INC.
 P.O. Box 230, Valrico, FL 33595
 Phone No.: 813.659.9197
 FBPE Registry No. 9813

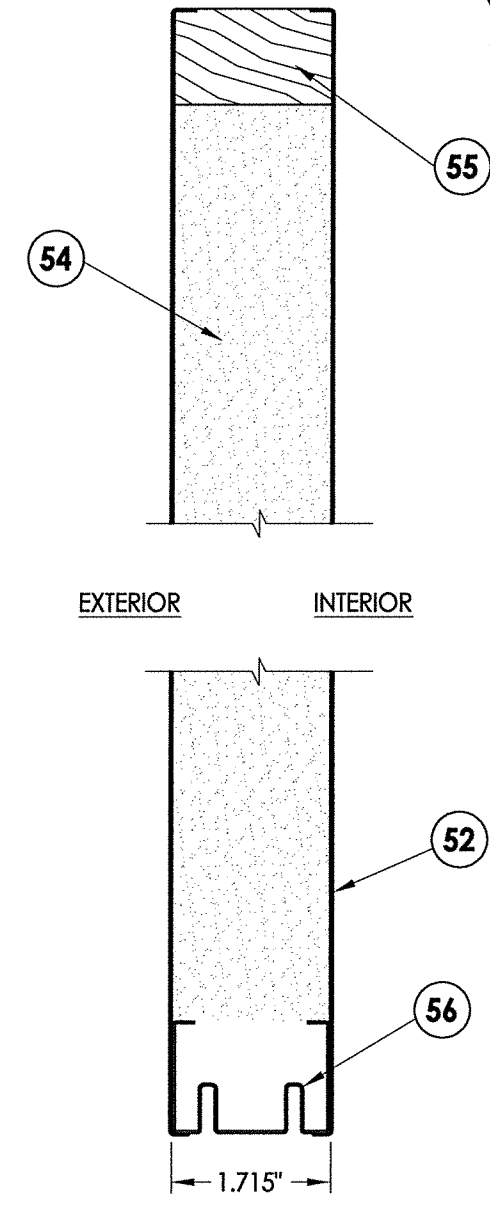
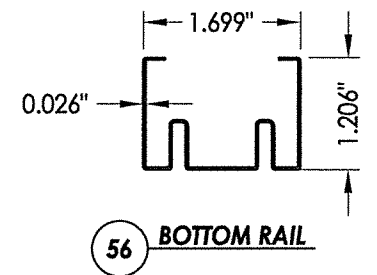
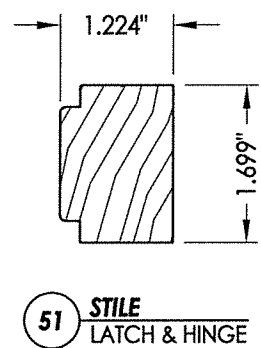
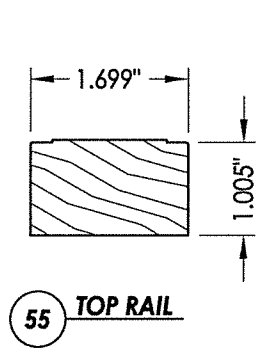
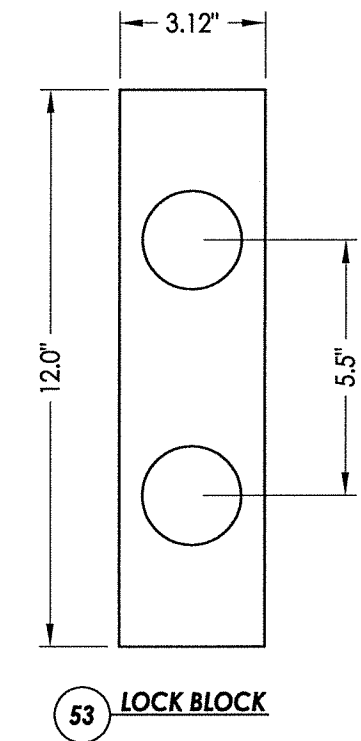
PRODUCT:
 DUNBARTON REDIFRAME
 ONE-PIECE STEEL FRAME
 PART OR ASSEMBLY:
 STEEL FRAME CROSS SECTION
 & DETAILS

NO.	DATE	BY	REVISIONS
3	8/12/20	DAC	UPDATE TO 7TH ED. (2020) FBC
2	9/29/17	LFS	UPDATE TO 6TH ED. (2017) FBC
1	3/24/15	JK	UPDATE TO 5TH ED. (2014) FBC

DATE: 3/14/12
 SCALE: N.T.S.
 DWG. BY: AL
 CHK. BY: LFS
 DRAWING NO.: FL-15366.3
 SHEET 2 OF 8



1 HORIZONTAL CROSS SECTION
3 Door panel

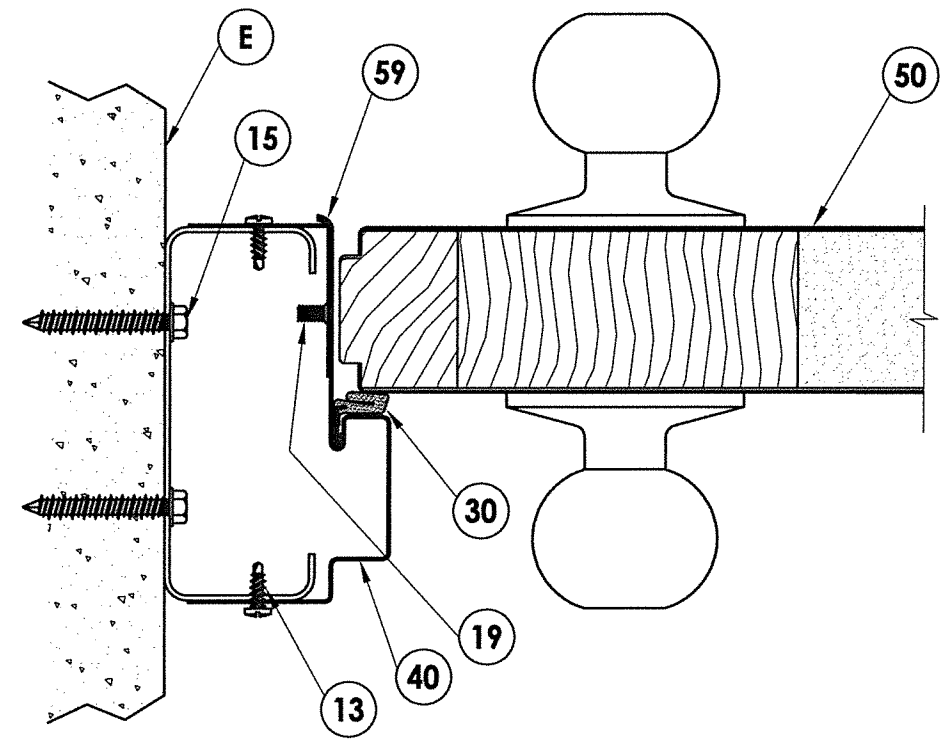
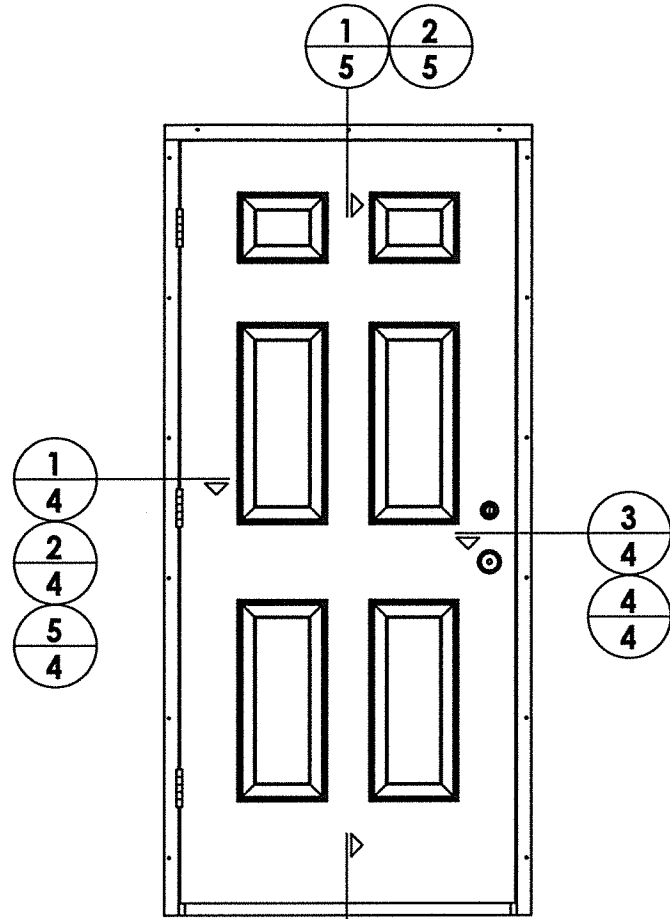


2 VERTICAL CROSS SECTION
3 Door panel

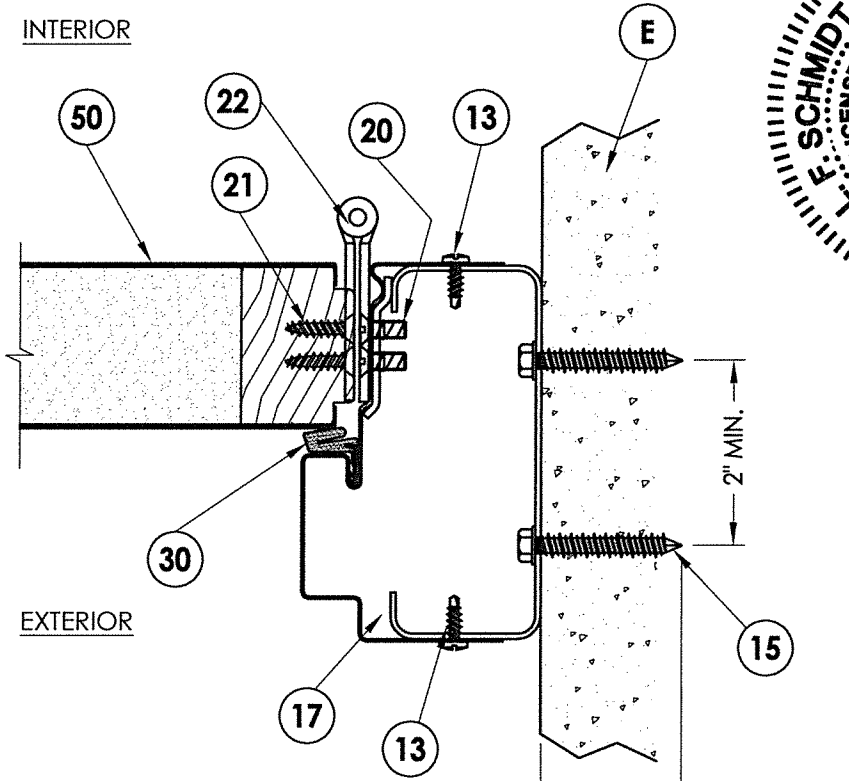
PRODUCT:		DUNBARTON REDIFRAME	
		ONE-PIECE STEEL FRAME	
PART OR ASSEMBLY:		DOOR PANEL DETAILS	
NO.	DATE	BY	
3	8/12/20	UPDATE TO 7TH ED. (2020)	FBC DAC
2	9/29/17	UPDATE TO 6TH ED. (2017)	FBC LFS
1	3/24/15	UPDATE TO 5TH ED. (2014)	FBC JK

DATE: 3/14/12
 SCALE: N.T.S.
 DWG. BY: AL
 CHK. BY: LFS
 DRAWING NO.: FL-15366.3
 SHEET 3 OF 8

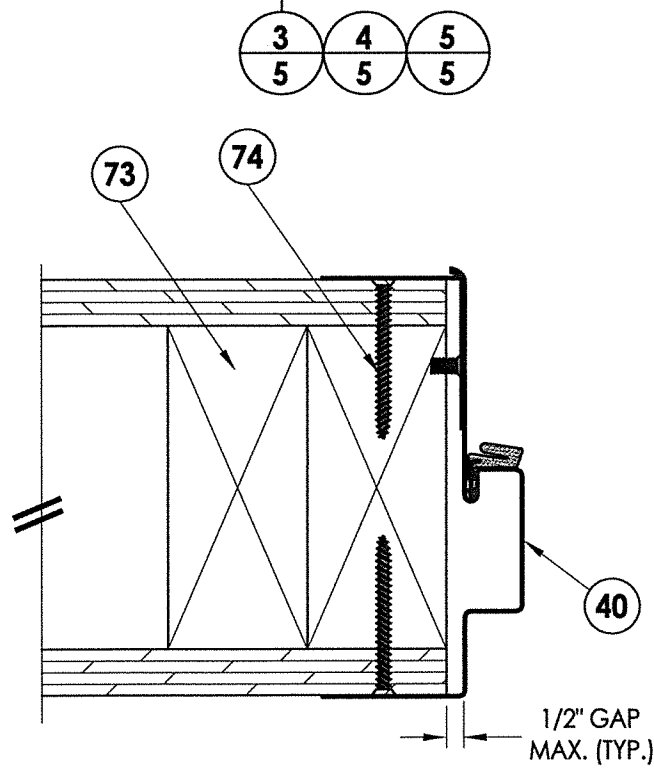
August 12, 2020
 Documents Prepared By: Lyndon F. Schmidt P.E. No. 43409
 PROFESSIONAL ENGINEER
 R.W. BUILDING CONSULTANTS, INC.
 P.O. Box 230, Vairico, FL 33595
 Phone No.: 813.659.9197
 FBPE Registry No. 9813



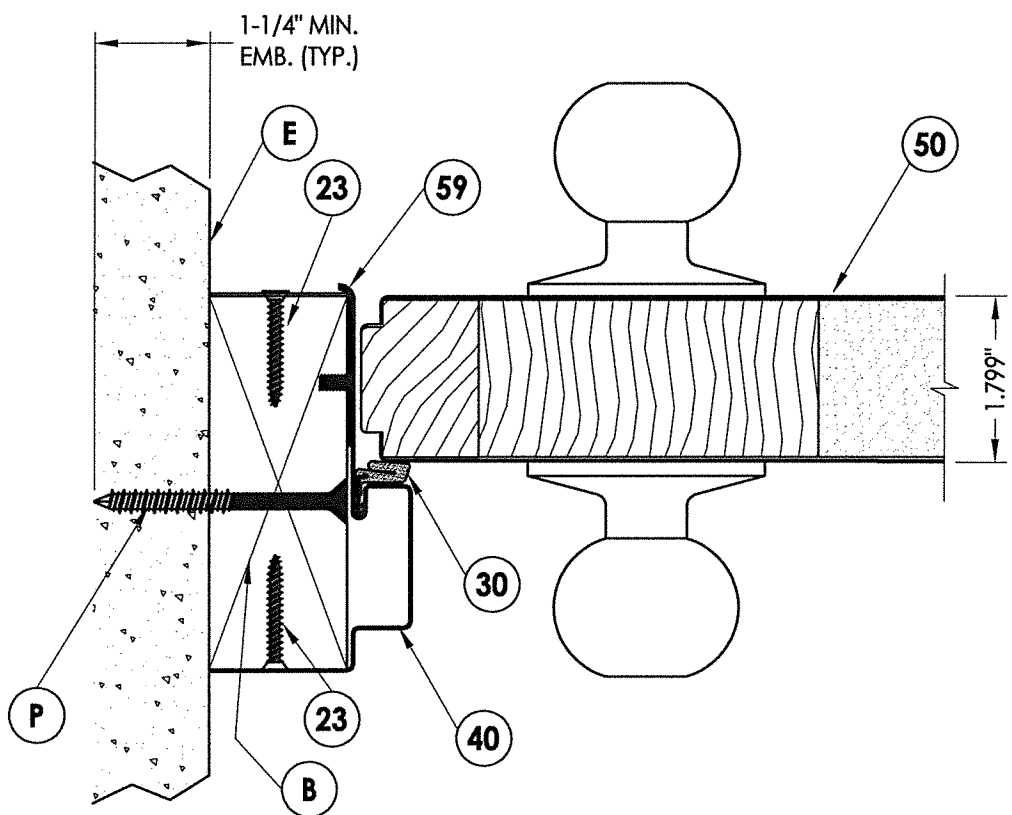
2 HORIZONTAL CROSS SECTION
4 Steel Stud Buck



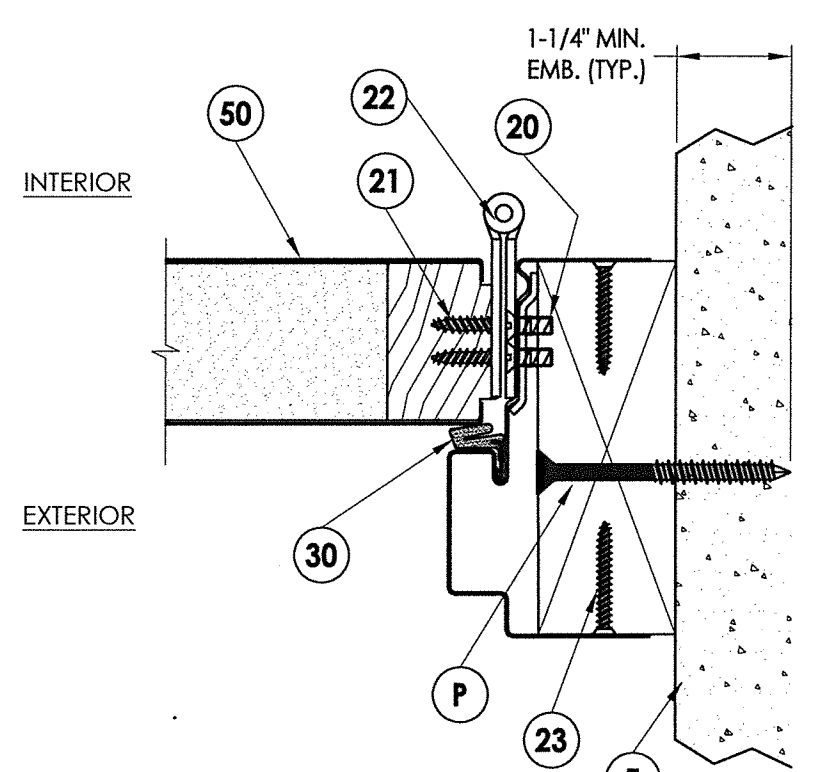
4 HORIZONTAL CROSS SECTION
4 Steel Stud Buck



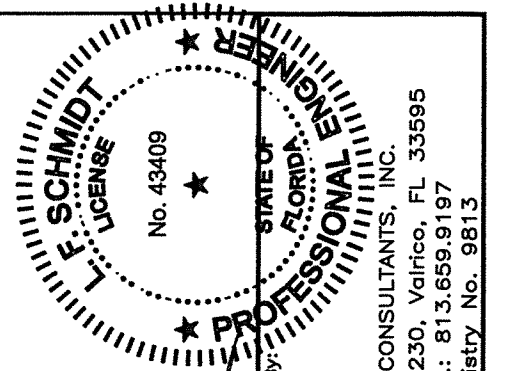
5 HORIZONTAL CROSS SECTION
4 Optional 2X Stud Construction



1 HORIZONTAL CROSS SECTION
4 Steel Stud Buck



3 HORIZONTAL CROSS SECTION
4 Steel Stud Buck

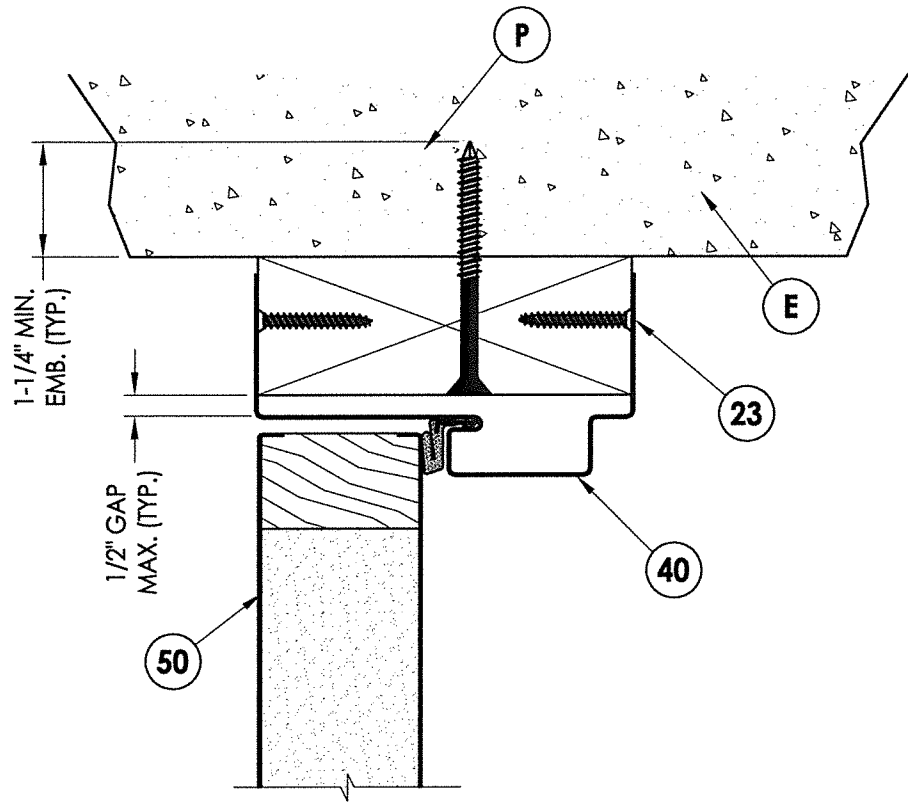


August 12, 2020
 Documents Prepared By:
 Lyndon F. Schmidt
 P.E. No. 43409
 RW BUILDING CONSULTANTS, INC.
 P.O. Box 230, Vairico, FL 33595
 Phone No.: 813.659.9197
 FBPE Registry No. 9813

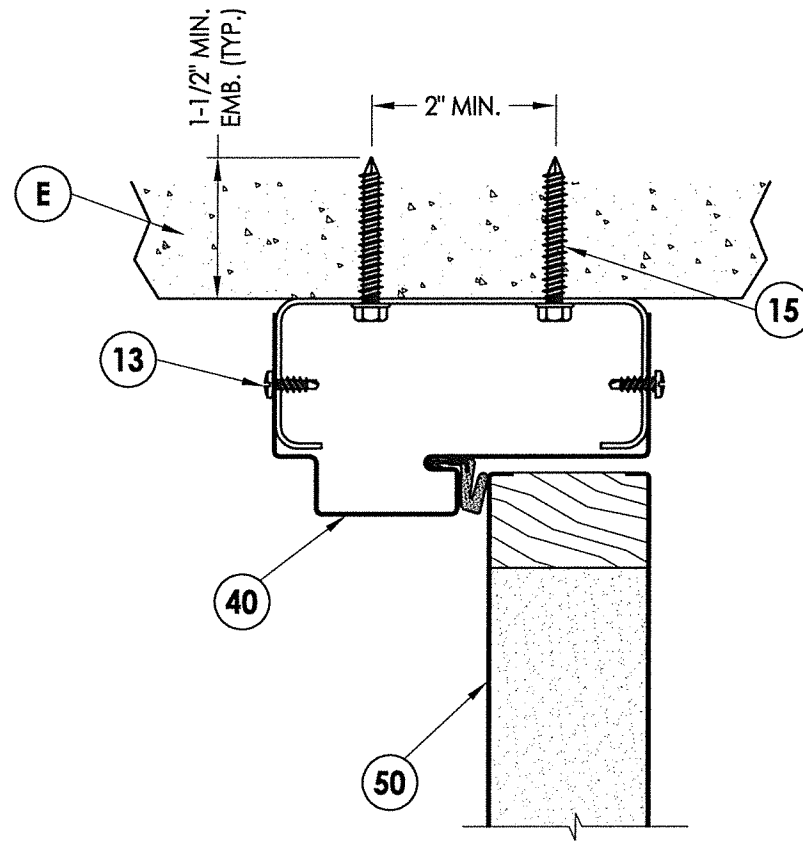
PRODUCT:	DUNBARTON REDIFRAME ONE-PIECE STEEL FRAME
PART OR ASSEMBLY:	HORIZONTAL CROSS SECTIONS

NO.	DATE	BY	REVISIONS
3	8/12/20	DAC	UPDATE TO 7TH ED. (2020) FBC
2	9/29/17	LFS	UPDATE TO 6TH ED. (2017) FBC
1	3/24/15	JK	UPDATE TO 5TH ED. (2014) FBC

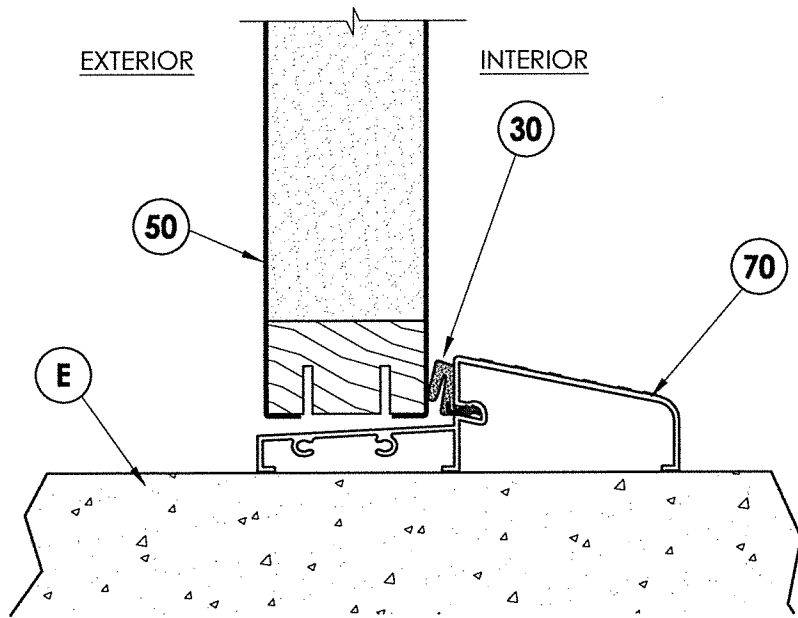
DATE:	3/14/12
SCALE:	N.T.S.
DWG. BY:	AL
CHK. BY:	LFS
DRAWING NO.:	FL-15366.3
SHEET	4 OF 8



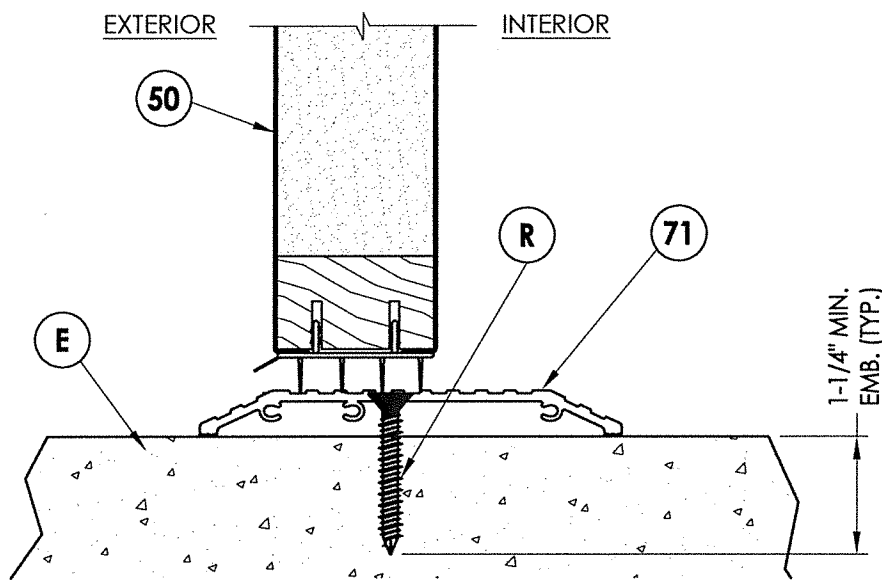
1 VERTICAL CROSS SECTION
5 SHOWN W/ WOOD BUCK



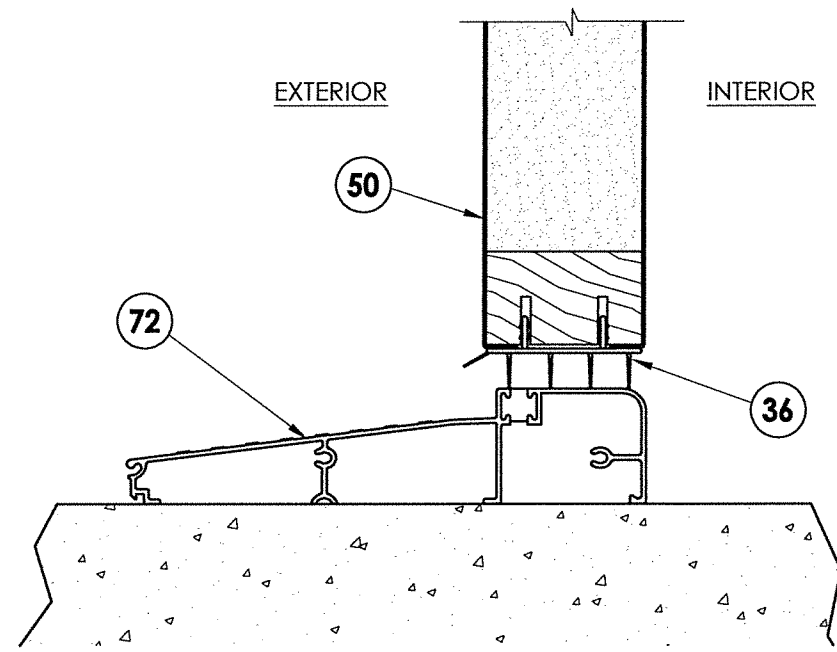
2 VERTICAL CROSS SECTION
5 SHOWN W/ STEEL BUCK



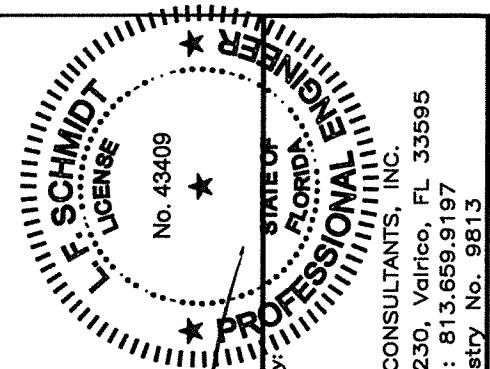
3 VERTICAL CROSS SECTION
5 SHOWN W/ OUTSWING BUMP FACE



4 VERTICAL CROSS SECTION
5 SHOWN W/ ADA SILL



5 VERTICAL CROSS SECTION
5 SHOWN W/ INSWING SADDLE



August 12, 2020
Lyndon F. Schmidt
P.E. No. 43409

Documents Prepared By:
Lyndon F. Schmidt
P.E. No. 43409

R.W.
BUILDING CONSULTANTS, INC.
P.O. Box 230, Valrico, FL 33595
Phone No.: 813.659.9197
FBPE Registry No. 9813

PRODUCT:
DUNBARTON REDIFRAME
ONE-PIECE STEEL FRAME
PART OR ASSEMBLY:
VERTICAL
CROSS SECTIONS

NO.	DATE	REVISIONS
3	8/12/20	UPDATE TO 7TH ED. (2020) FBC DAC
2	9/29/17	UPDATE TO 6TH ED. (2017) FBC LFS
1	3/24/15	UPDATE TO 5TH ED. (2014) FBC JK
		BY

DATE: 3/14/12

SCALE: N.T.S.

DWG. BY: AL

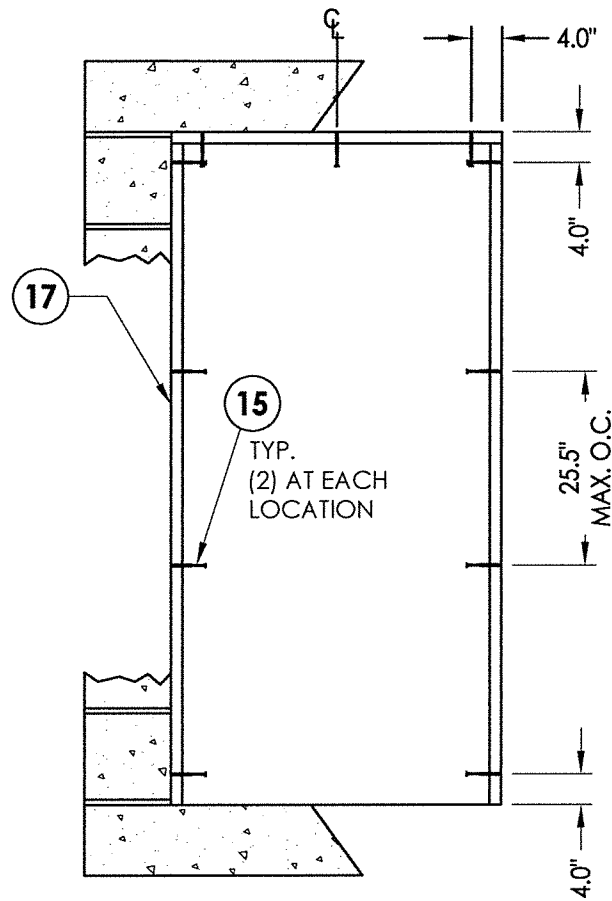
CHK. BY: LFS

DRAWING NO.: FL-15366.3

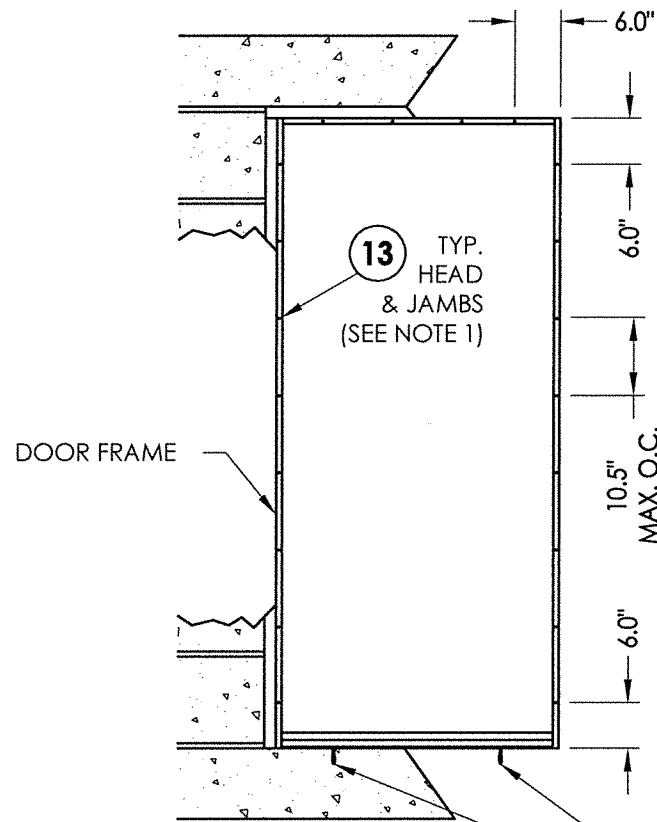
SHEET 5 OF 8

NOTE:

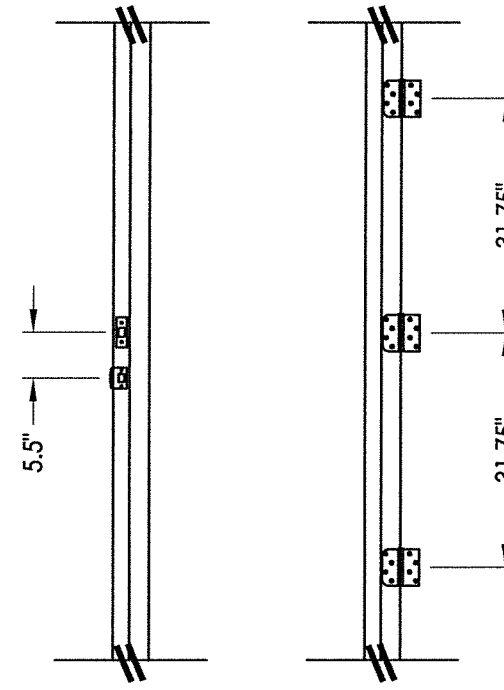
1. A minimum of 3 threads shall protrude through the steel stud buck substrate.



BUCK ANCHORING
steel stud



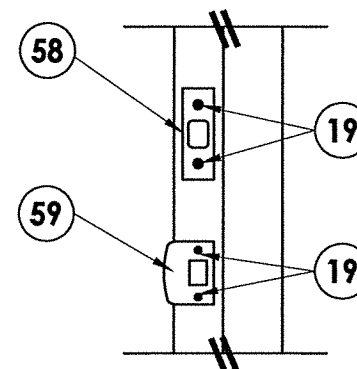
FRAME ANCHORING
Masonry steel buck construction



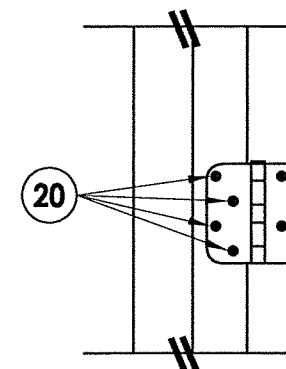
STRIKE JAMB

HINGE JAMB

R ITEM #R IS USED ONLY WHEN ITEM #71, THE ADA THRESHOLD IS USED



STRIKE PLATE DETAIL

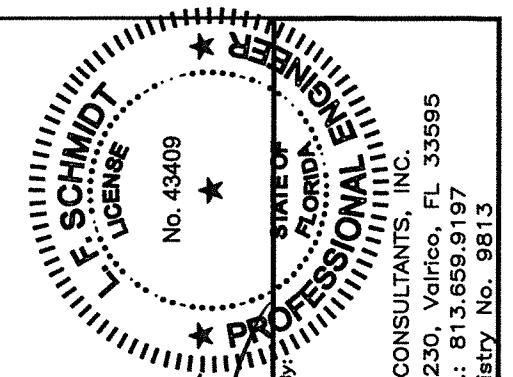


HINGE DETAIL 1

CONCRETE ANCHOR NOTES:

1. Substitution of equal concrete anchors from a different supplier may have different edge distance and center distance requirements.
2. Concrete anchor locations at the corners may be adjusted to maintain the min. edge distance to mortar joints. If concrete anchor locations noted as "MAX. ON CENTER" must be adjusted to maintain the min. edge distance to mortar joints, additional concrete anchors may be required to ensure the "MAX. ON CENTER" dimensions are not exceeded.
3. Concrete anchor table:

ANCHOR TYPE	ANCHOR SIZE	MIN. EMBEDMENT	MIN. CLEARANCE TO MASONRY EDGE	MIN. CLEARANCE TO ADJACENT ANCHOR
ITW TAPCON®	3/16"	1-1/2"	3"	2" (REDUCED)



August 12, 2020
 Documents Prepared By:
 Lyndon F. Schmidt
 P.E. No. 43409
 R.W. BUILDING CONSULTANTS, INC.
 P.O. Box 230, Vairico, FL 33595
 Phone No.: 813.659.9197
 FBPE Registry No. 9813

PRODUCT:
 DUNBARTON REDIFRAME
 ONE-PIECE STEEL FRAME

PART OR ASSEMBLY:
 BUCK & FRAME ANCHORING
 STEEL STUD

NO.	DATE	REVISIONS
3	8/12/20	UPDATE TO 7TH ED. (2020) FBC DAC
2	9/29/17	UPDATE TO 6TH ED. (2017) FBC LFS
1	3/24/15	UPDATE TO 5TH ED. (2014) FBC JK

DATE: 3/14/12
 SCALE: N.T.S.
 DWG. BY: AL
 CHK. BY: LFS
 DRAWING NO.: FL-15366.3
 SHEET 7 OF 8

